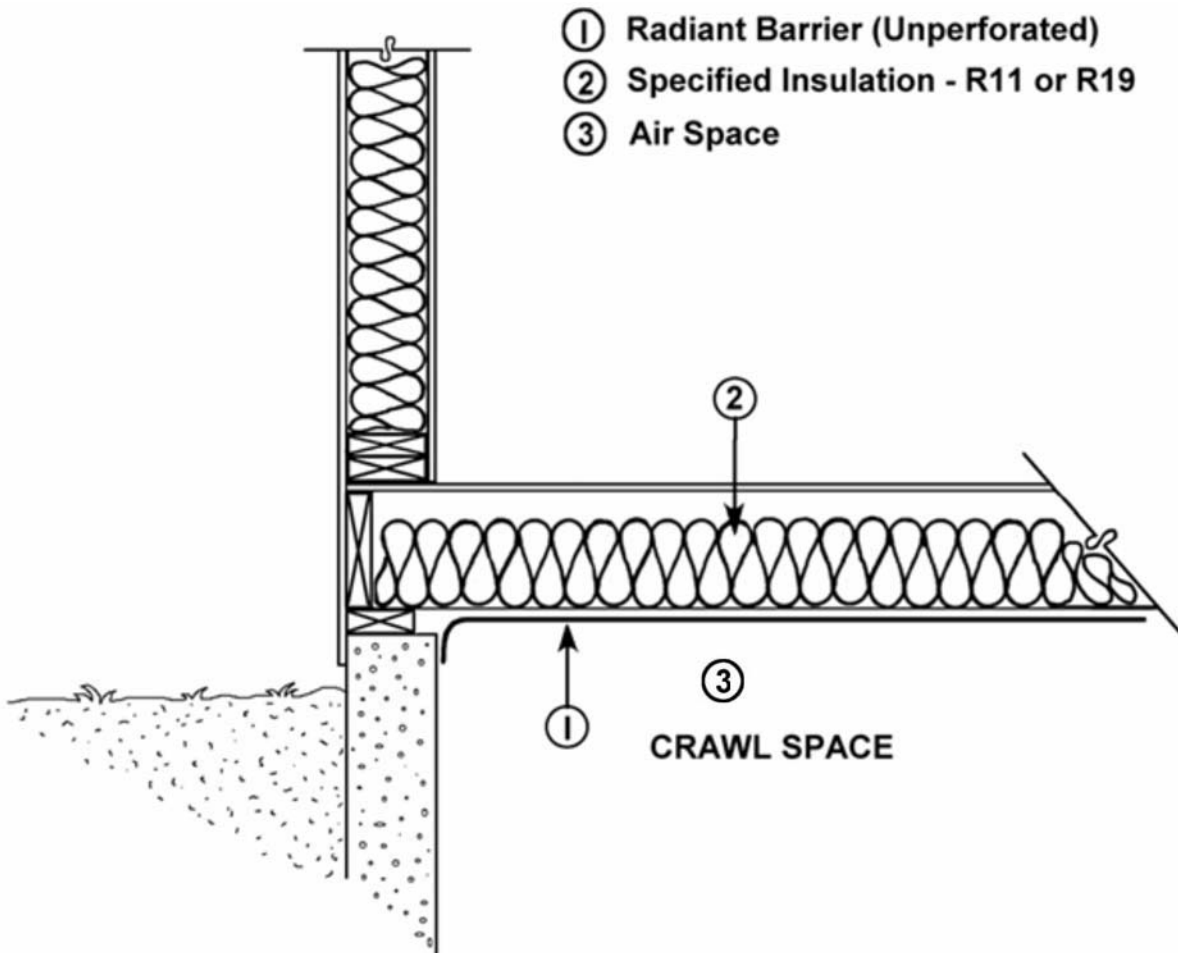


## CRAWL SPACE INSTALLATION OF AFS RADIANT BARRIER (RB) IN COLD CLIMATES



- Apply unperforated RB directly to bottom of floor joists.
- Overlap RB 1 - 1 1/2" inches and tape all seams as well as all penetrations, such as, for electrical and plumbing.
- Turn down edge on perimeter next to foundation and tape or extend to ledger and caulk.

**NOTE:** This is an excellent vapor retarder system and requires all penetrations, seams or openings of any kind to be properly sealed.

The drawing above represents a typical crawl space assembly. For assemblies requiring other methods of installation or fastening, please contact a factory representative.

**Advanced Foil Systems** 820 S. Rockefeller Ave., Ste. A, Ontario, Calif. 91761 Ph.  
1 800-421-5947 Fax. (909) 390-5127